



### 18 Graham Street Wonthaggi VIC

3  2  2 

Located in the heart of Wonthaggi, this solid, craftsman-built brick home offers space, comfort, and incredible future potential. Perfectly positioned on a corner block just 500 metres from the town centre, you'll enjoy unrivalled convenience ? with parklands, sporting ovals, and open spaces all within a short five-minute stroll.

Inside, the home surprises with its generous proportions and natural light. Featuring three spacious bedrooms with built-in robes, a central bathroom plus a second shower and toilet, and two large open-plan living areas, it strikes a perfect balance between space, privacy, and everyday liveability.

The huge kitchen offers ample bench space and storage,

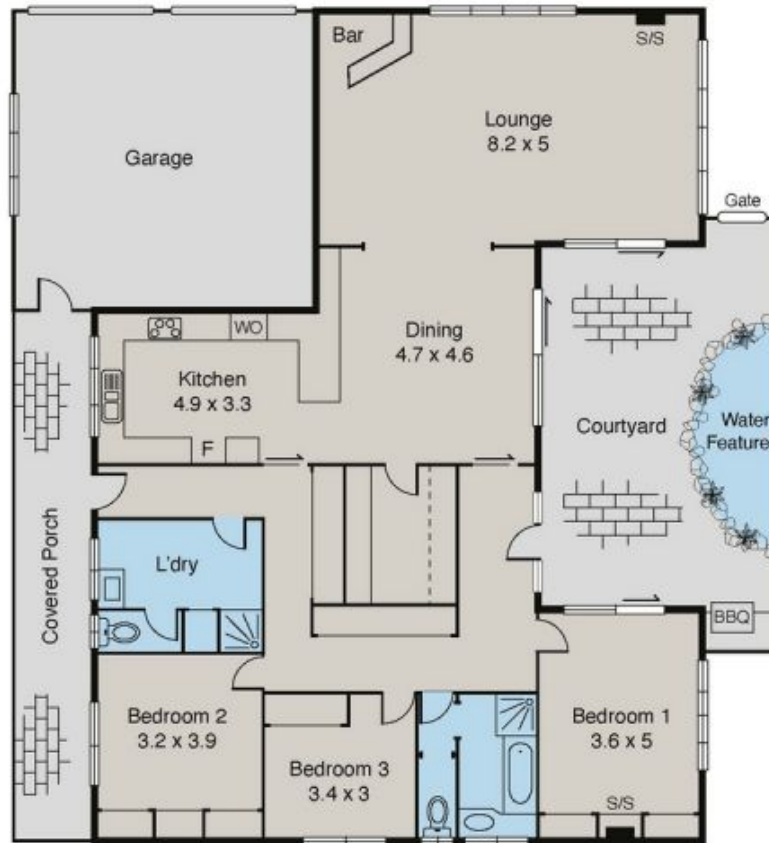
[For full version visit the website](https://www.priceandcorealestate.au)

**Type** : House  
**Price** : \$ 550,000  
**Land Size** : 629 sqm  
**View** : <https://www.priceandcorealestate.au/sale/vic/gippsland/wonthaggi/residential/house/8542533>



**Julian Price**  
0400 303 671

Wonthaggi  
18 Graham Street,



Disclaimer: Please note all plans are indicative only and not drawn to scale. All stated dimensions and details are approximate only and do not constitute any representations by the vendors, their agents or their suppliers. All interested parties should make their own enquiries to satisfy themselves of all pertinent details.

# Wonthaggi

18 Graham Street,



Disclaimer: Please note all plans are indicative only and not drawn to scale. All stated dimensions and details are approximate only and do not constitute any representations by the vendors, their agents or their suppliers. All interested parties should make their own enquiries to satisfy themselves of all pertinent details.